

FRANKFURT AIRPORT - 2020

REPRESENTATIVE DETAILS

MDS Frankfurt
Pittlerstrasse 31
D-63225 Langen

See next page for maps to help you
find the Frankfurt Airport location.

CONTACT DETAILS / HOURS

p: +49 (0)692 5738 5652
e: mds.frankfort@mdsparc.com
o: Mon-Fri 9am-5pm

Open outside above hours/days with flight details or appointment confirmed 4 working days in advance.



GOOGLE MAP LINK
CLICK HERE

COLLECTION PROCEDURE

After collecting your luggage, contact MDS on the above phone number. They will tell you where to wait for your courtesy transfer to the location (20-30mins away).

- **Arriving off a flight?** As long as your flight details are on your voucher/contract, please follow above procedure.
- **Not arriving off a flight?** Please phone or email the location to reconfirm your collection time 4 working days in advance, then either make your way to the location address noted above or call for your courtesy transfer from the airport.

Note: MDS will only wait for one hour after the arrival time of your flight, or 30mins after any agreed appointment time.

PREPARING FOR YOUR RETURN

You must phone or email the return location 4 working days in advance to book your return appointment (time).

RETURN PROCEDURE

Please return your vehicle to the MDS address noted above. You will be returned to your departure terminal in a courtesy shuttle.

Note: be sure to insert 'Langen' as the return CITY in your GPS.

CITROËN
DRIVE EUROPE



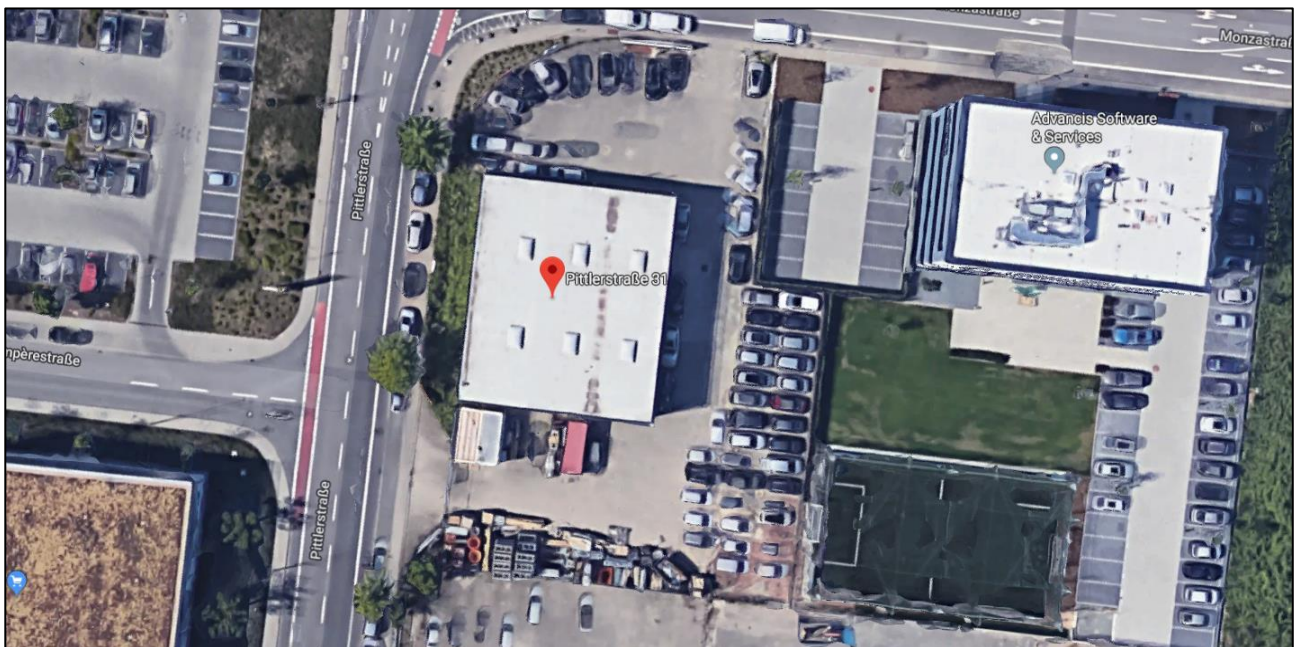
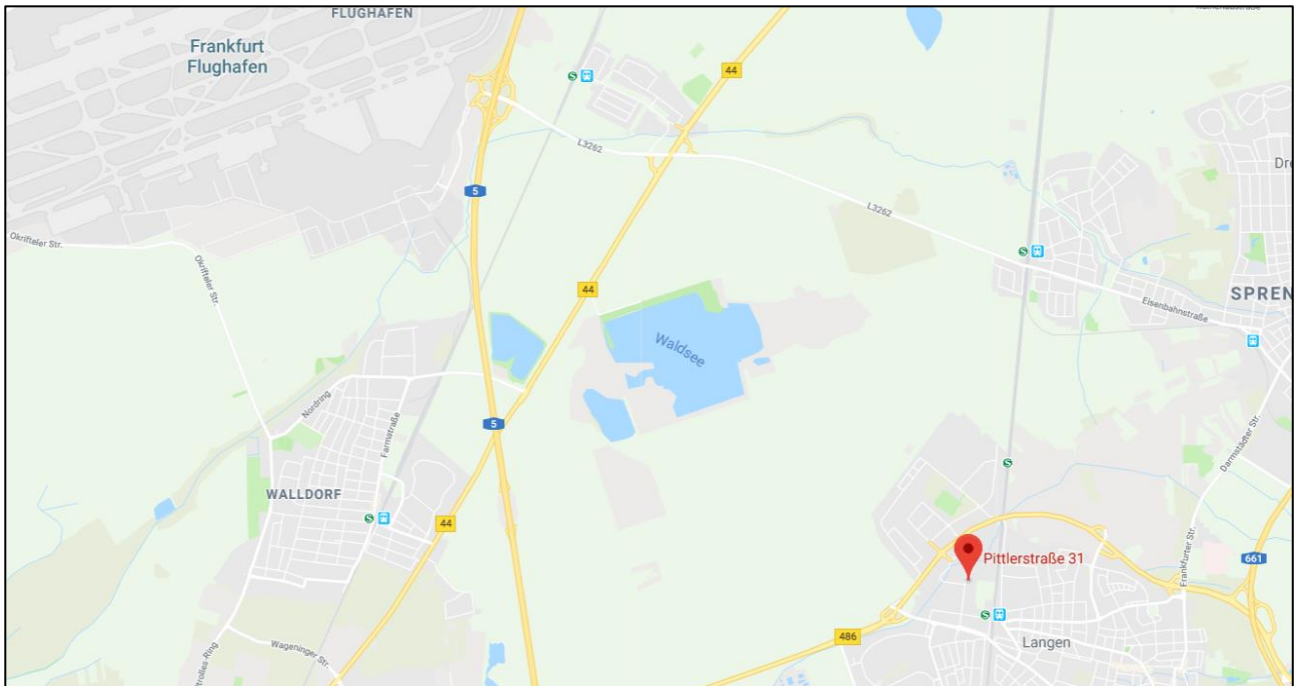
Copyright – Citroen Drive Europe (NZ), a division of Drive Holidays Ltd.

www.citroendriveeurope.co.nz / citroen@driveeurope.co.nz / Ph: +64 9 394 7709

FRANKFURT AIRPORT - 2020



GOOGLE MAP LINK
CLICK HERE



CITROËN
DRIVE EUROPE



Copyright – Citroen Drive Europe (NZ), a division of Drive Holidays Ltd.

www.citroendriveeurope.co.nz / citroen@driveeurope.co.nz / Ph: +64 9 394 7709